

# ParkPro 3.0 for Parking Management

Managing a parking can be a simple task but it encompasses many aspects like managing members belonging to different groups, managing payment for those who have no free access, managing reservations efficiently and most of all managing self-parking along side with valet parking in one system.

**ParkPro 3.0** is a modular and powerful tool that not only answers all these questions but also offers possibilities like variable rate billing, parking occupancy monitoring, flow analysis, long and short range season passes, event validations, space reservation, management of extra charges, and much more.

In public parking lots, **ParkPro 3.0** can manage multiple entry and exit columns and multiple fixed or portable cashiers as well as Pay-On-Foot machines. The entry columns are be equipped with simple short range or long range RFID readers, barcode ticket dispensers or a combination of both; similarly the exit columns are equipped with RFID cards, barcode tickets readers or a combination of both:

- At the entrance, a car owner picks up a barcode ticket or presents his season pass to gain access
- At the cashiers or the POF a car owner validates his ticket after paying the due amount
- At the exit, a car owner reads his validated ticket or his season pass to be authorized to exit

In private parking lots, **ParkPro 3.0** manages the entrances and the exits through short or long range RFID readers while monitoring the activity at the control station and optionally displaying the portrait of the card holder next to the live camera view for real time verification or a delayed one based on the recorded snap shots.

## A cost efficient solution that automates all of your Parking Management operation

### The Basic Module Features Include:

Secured network communication between the various elements of the system: Entry/Exit columns, the cashiers and the server

Password protected screens, with full trace of all the transactions and manipulations during every shift

Complete log of the activity, with full details on the manual overrides and alerts

Flexible rates that can be tailored to meet any time or count criteria, with seasonal passes, membership discounts or vouchers

Audio or Video intercom between the peripheral devices and the central station

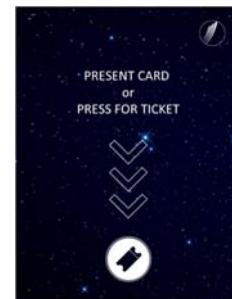
Full monitoring of the parking occupancy with the possibility of displaying available spaces at critical cross points

Group management where a limited number of spaces is allocated for a larger number of card holders

Large touch screen monitors at the peripheral devices to offer clear instructions and customized messages

Detailed reports on the daily transactions to be printed locally or exported to accounting systems

Full integration with ValetPro to offer in one system self and valet parking and hence a higher efficiency in the space management



Entrance Screen



Parking Column

## Expand the power of your Parking Management with its Open Architecture

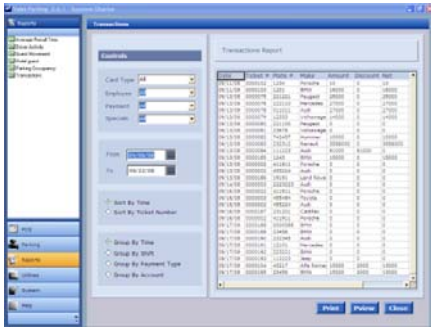
**ParkPro 3.0** is designed and developed by **CHIP** based on years of expertise and customer feedback in the parking management market. One of its attributes is that it can be tailored to the needs of the operator and can interface with any open architecture parking management systems or any other accounting application or access control Systems to exchange card holders, export transactions to accounting. Moreover, it can export to excel in order to edit statistical reports on the operation's efficiency.

### Additional Modules

- Automatic Number Plate Recognition at the entrance and exit to link a plate to a ticket at the entrance and verify the match at the exit
- Single Space Monitoring and Occupancy Displays to indicate to the driver the closest available space to park at
- Credit Card payment at the POF that is already equipped with a multi-currency recycler that can handle an unlimited number of bank notes
- Long Term Parking and Stacking Management to increase the capacity of the parking space, when integrated with ValetPro
- Management of additional services including tasks scheduling and space reservation as well as a variety of discount vouchers and fidelity cards
- Central or exit as well as portable cashing with unmanned POF offering all sorts of payment facilities

## Control your management process and eliminate abuse

We, at **CHIP**, understand our customers' demands for a risk-free investment and a wise system that will serve them with exceptional performance now and well into the future. With **ParkPro** the return on investment is guaranteed and most of all the satisfaction of the clients and the possibility to centrally manage multiple sites will help you expand your business and increase your profitability.



Transactions Report Screen



Desktop/ handheld Terminals

### Benefits

- Monitor and Control Parking Access
- Manage the space for a higher income
- Identify cars instead of card holders using windshield tags
- Assign resources more effectively according to peak and low traffic
- Significantly cut down on data entry in accounting books
- Do away with thousands of stubs for verification purposes
- Identify and eliminate abuse of contracted operators

### Minimum System Requirements

- Ticket Dispenser:** Touch Screen Column with Barcode printer and/or RFID reader
- Exit Reader:** Touch Screen Column with Barcode reader and/or RFID reader
- Manual Cashier:** Touch Screen POS with Ticket validator and a customer display



Creative Hardware for Integrated Products

Tel: +961 (01) 573573  
Fax: +961 (01) 561599

Media Center building  
Accawi, Beirut, Lebanon

Email: [info@chip.com.lb](mailto:info@chip.com.lb)  
Url: [www.chip.com.lb](http://www.chip.com.lb)

